

# 2011 Economic Fact Sheet



District

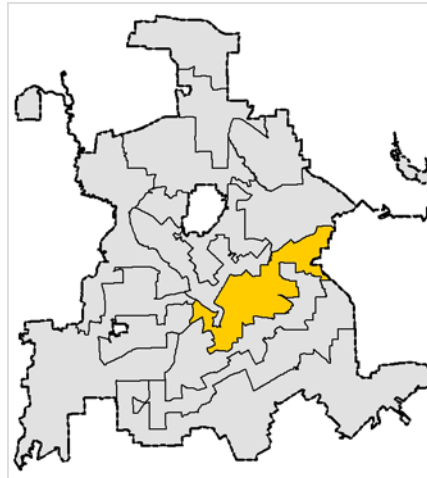
7

## Economic Development in District 7

### 2010 Economic Development Year in Review

Since 2005, the Office of Economic Development has been implementing its *Strategic Engagement* development plan for Dallas. Major development projects in District 7 last calendar year included the following:

- Dallas Area Rapid Transit opened the full 28 mile Green Line in December, expanding light rail service from North Carrollton to Pleasant Grove. New stations at Lawnview and Hatcher join the previously opened stations of Fair Park and MLK Jr. in District 7.
- Baylor Health Care System opened a \$15 million diabetes center at the Junita Craft Recreation Center, near the Frazier Court Dallas Housing Authority development, in June.



Texas Discovery Garden at Dallas Fair Park



Diabetes Health & Wellness Institute at Juanita Craft Recreation Center

## 2010 Real Property Taxable Value

	District 7 (in Billions)	% Change (‘09 to ‘10)	% of City Total
Total Value	\$2.18B	-3.6%	2.3%
Residential	\$1.16B	-4.6%	2.2%
Non-Residential	\$1.02B	-2.3%	2.5%

Source: Enterprise GIS, City of Dallas (base data from Dallas, Denton, and Collin County Appraisal Districts)

## 2010 New Construction Activity

	Single Family	Multi-Family	Non-Residential	Total
	Permits   Value	Permits   Value	Permits   Value	Permits   Value
District 7	32   \$3.5M	1   \$0.2M	13   \$19.0M	26   \$22.7M
Chng ‘09-‘10	-33.3%   -32.1%	-94.4%   -97.5%	-51.9%   -60.6%	-50.5%   -64.0%
% of City Total	3.8%   1.4%	1.6%   0.1%	7.6%   4.6%	4.3%   2.4%

Source: Department of Sustainable Development & Construction, Building Inspection Division, City of Dallas



Carpenter's Point Senior Living

DALLAS  
ECONOMIC  
DEVELOPMENT



Research & Information Division  
dallas-ecodev.org

## 2010 Commercial Real Estate

	Total	Industrial	Office	Retail
Total Inventory (Sq. Ft.)	11,964,341	8,321,519	1,020,687	2,622,135
% of Total City Inventory	3.2%	4.4%	0.9%	3.7%
Vacant Space (Sq. Ft.)	795,903	627,165	37,088	131,650
District Vacancy Rate	6.7%	7.5%	3.6%	5.0%
City Vacancy Rate	12.0%	8.4%	21.2%	7.0%

Source: CoStar, January 2011

## 2010 Jobs & Business Estimates

- ◆ District Labor Force: 35,167
- ◆ District Unemployment Rate: 8.6%
- ◆ City Unemployment Rate: 8.8%
- ◆ Employed District Residents: 32,157
- ◆ Total Jobs in District (Including Government): 25,211

Private Industries	District Businesses		District Jobs
	Number	% of City	% of City
Construction, Natural Resources & Mining	194	4.4%	4.0%
Manufacturing	85	3.4%	2.8%
Trade, Transportation & Utilities	550	4.4%	4.2%
Information	33	2.2%	2.5%
Financial Activities	178	2.3%	1.2%
Professional & Business Services	531	2.5%	1.3%
Education & Health Services	179	3.3%	3.3%
Leisure & Hospitality	133	3.8%	2.4%
Other Services	380	6.6%	6.0%
<b>Total</b>	<b>2,263</b>	<b>3.5%</b>	<b>2.8%</b>

Source: Dunn & Bradstreet data, January 2011, and OED Analysis of Alteryx DemographicsNow data, 2010

## Fast Facts

	District 7	City of Dallas
Jobs / Acre	1.7	4.7
Commercial Real Estate / Acre	809.3 sq. ft.	1,821.8 sq. ft.
Businesses / Acre	0.15	0.30
New Construction Value / Acre	\$1,537	\$4,375
Property Tax Base / Acre	\$148K	\$429K
Size	23.1 sq. mi.	342 sq. mi.

Source: Dallas Office of Economic Development estimates



Lawnview DART Station

**NOTE ON ESTIMATIONS:** For information see the methodology section at [http://www.dallas-ecodev.org/fact\\_sheets.html](http://www.dallas-ecodev.org/fact_sheets.html)

**CENSUS 2010:** OED's 2011 Council District Fact Sheets include only economic data. Census 2010 population data is under review for the City's redistricting process and will be included in a later update. Economic statistics are now provided by the American Community Survey, but is not published in a format that can be matched to Council District boundaries.